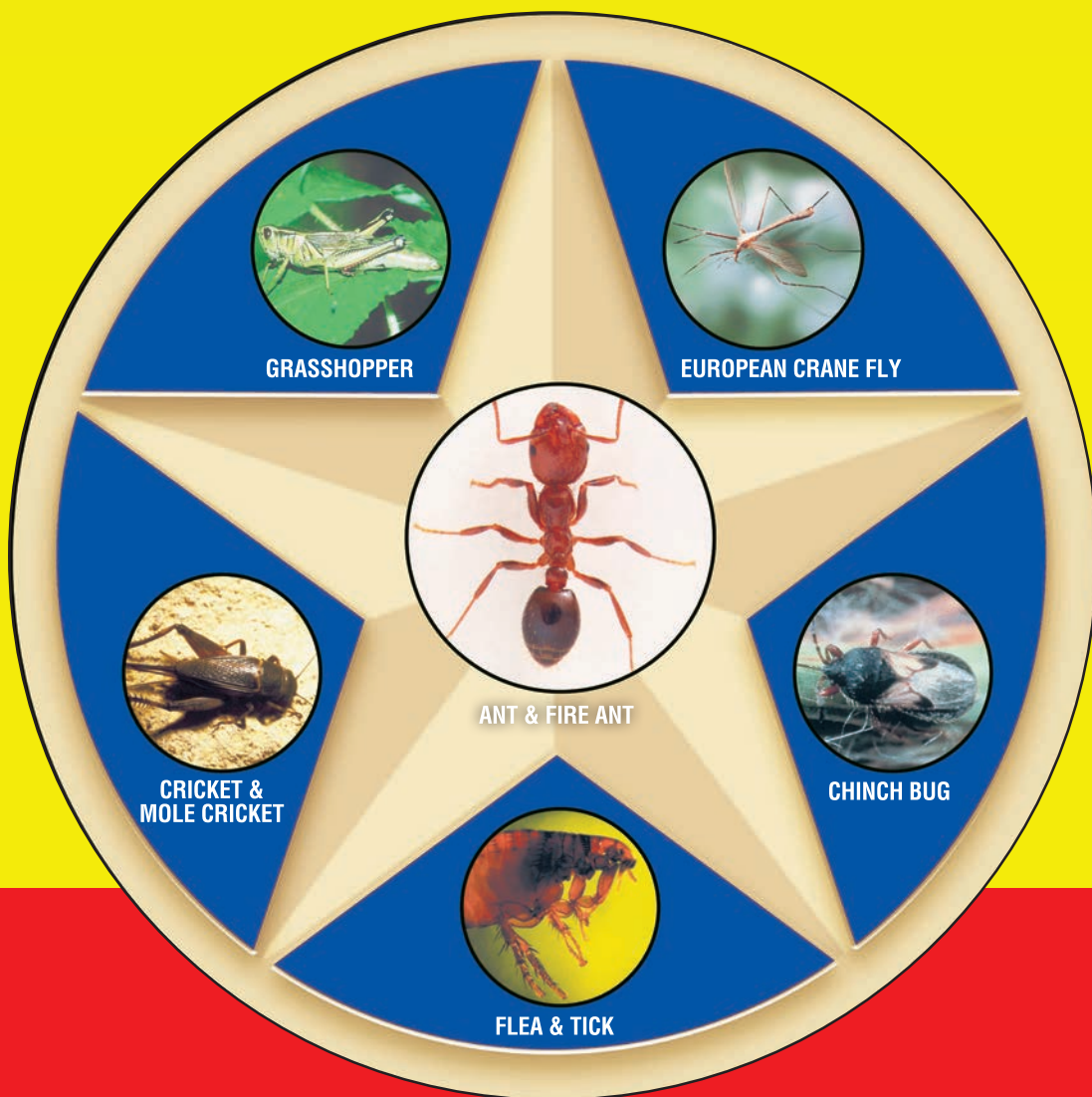


# Hi-Yield®

## Turf Ranger

**INSECT CONTROL GRANULES**

CONTAINING DELTAMETHRIN



**FOR RESIDENTIAL USE ONLY**

- Lawn Insect Control
- Controls Home Invading Pests
- Treats Up To 5,000 Sq. Ft.

**ACTIVE INGREDIENTS:**

Deltamethrin: (s)-alpha-cyano-3-phenoxybenzyl- (1R,3R)-3-(2-2 dibromovinyl)-2,2-dimethyl .....	0.1%
OTHER INGREDIENTS: .....	99.9%
TOTAL: .....	100%

**KEEP OUT OF REACH OF CHILDREN**

**CAUTION**

See Back Panel For Additional  
Precautionary Statements.

32320-1014-TP



**NET WEIGHT 10 LBS. (4.53 KG)**

32320

**Turf Ranger Insect Control Granules**

## DIRECTIONS FOR USE

It is a violation of Federal Law to use this product in a manner inconsistent with its labeling.

## STORAGE AND DISPOSAL

**PESTICIDE STORAGE:** Store in original container. Keep in an area inaccessible to children and pets.

**PESTICIDE DISPOSAL: If empty: Non-refillable container.** Do not reuse or refill this container. Place in trash or offer for recycling if available. **If partly filled:** Call your local solid waste agency for disposal instructions. Never place unused product down any indoor or outdoor drain.

## GENERAL INFORMATION

**HI-YIELD® TURF RANGER INSECT CONTROL GRANULES CONTAINING DELTAMETHRIN** is a broad spectrum residual insecticide for the control of certain insects in home lawns. Treat as directed – water in granules with ½ inch of water. This product is extremely toxic to fish. Use with care when applying in areas adjacent to any body of water. Do not apply on saturated soil. Do not allow runoff to occur. Do not contaminate ornamental fish ponds.

In New York state, this product may not be applied to lawns that directly border coastal marshes. For control of turf insects other than Fleas and Ticks in New York state, a second application may be made after two weeks if target insect activity persists.

Not for use in commercial greenhouse or nurseries.

Not for use on sod farms, grass grown for seed or on golf course turf.

Food utensils such as spoons and measuring cups must not be used for food purposes after use in measuring pesticides. Do not allow children or pets on treated areas until granules have been watered into the soil and the grass or soil is dry. **HOME LAWN RECOMMENDATIONS:** Use **HI-YIELD® TURF RANGER INSECT CONTROL GRANULES CONTAINING DELTAMETHRIN** to control specified pest of lawns.

Apply **HI-YIELD® TURF RANGER INSECT CONTROL GRANULES CONTAINING DELTAMETHRIN** to give complete and uniform coverage of pest infested areas. Applications should be made using the rates shown below.

PESTS	DOSAGE OF PRODUCT	APPLICATION PROCEDURE
Ants, Armyworms, Bermudagrass Mites, Billbugs (Adult), Boxelder Bugs, Centipedes, Chiggers, Chinch Bugs, Clover Mites, Cockroaches, Crickets, Cutworms, Darkling Ground Beetles, Digger Wasps, Essex Skipper, Field Crickets, Fiery Skipper, Fire Ants, Flea Beetles, Fleas, Grasshoppers, Hyperodes, Japanese Beetles, Lawn Moths, Leafhoppers, Mealy Bugs (Adult), Mole Crickets (aid in control), Scorpions, Silverfish and Firebrats, Sod Webworms, Sowbugs, Spiders, Spittlebugs, Springtails, Ticks (including Lyme disease vectors), Vegetable Weevils	2 to 3 pounds per 1,000 sq. ft.	Apply this product uniformly to home lawns, under shrubbery and other ornamental recreational grassy areas. Treat when insects first appear. Immediately after application, water the lawn thoroughly with half an inch of water. Retreat only as necessary to maintain insect control.
European Crane Fly Larvae (Leather Jackets)	2 to 3 pounds per 1,000 sq. ft.	Apply in early April when insects are young.
Chinch Bugs	2 to 3 pounds per 1,000 sq. ft.	Start treatment when temperatures reach 80°F or above. A second application may be necessary in 6 weeks if insect activity continues.

**APPLICATION EQUIPMENT: HI-YIELD® TURF RANGER INSECT CONTROL GRANULES CONTAINING DELTAMETHRIN** is a granular formulation. Apply with a fertilizer spreader or equivalent as uniformly as possible. The following table lists application equipment and recommended settings for that equipment for the application of **HI-YIELD® TURF RANGER INSECT CONTROL GRANULES CONTAINING DELTAMETHRIN**.

## APPLICATION EQUIPMENT AND INSTRUCTIONS

This product can be applied with a drop or broadcast (rotary) spreader. For best results, apply this product evenly and uniformly over the turfgrass (lawn) area avoiding streaking, skips or overlaps. Before each application, determine the correct amount (lbs.) of product to place in the spreader hopper for the area to be treated. For example, if the label states to apply 3 lbs. per 1,000 sq. ft. and your area is 2,000 sq. ft., then place 6 lbs. of product in the hopper and set the spreader setting at 3 ¼ (per table below) if using the Accugreen drop spreader. A more uniform application can be made by spreading one-half of the recommended amount of this product over the turfgrass area and then applying the remaining one-half of this product at a right angle to the previous application direction.

**NOTE: The spreader settings listed below are approximate. The speed at which you walk and the working condition of the spreader will affect the rate of application.**

Spreader	Spreader Settings Lbs. of product per 1,000 sq. ft	
	2 lbs.	3 lbs.
Scotts®/Republic Accugreen (Drop)	2½	3¼
Scotts®/Republic Speedy Green (Broadcast )	2¾	3½
ferti•lome®/Earthway Ev-N-Spred (Broadcast)	13	14

**FLEA AND TICK CONTROL (OUTDOORS):** For control of **Fleas and Ticks (including, but not limited to Bear Tick, Black –legged Tick, Brown Dog Tick, Deer Tick, Lone Star Tick, Western Black-legged Tick, Wood Tick)**, a regular treatment program should be followed. Treat once a month as directed above when pests first appear in late spring (May-June) and continue until late summer (September-October).

**SOD WEBWORMS:** If **Lawn Moths (Sod Webworm Adults)** are noticed in large numbers at dusk, or at first sign of damage to lawn, treat entire lawn evenly.

**PERIMETER TREATMENT:** To help prevent infestation of buildings by **Ants, Boxelder Bugs, Brown Dog Ticks, Centipedes, Cockroaches, Clover Mites, Crickets, Field Crickets, Fire Ants, Fleas, Scorpions, Sowbugs, Spiders, Springtails (Collembola) and Ticks**, treat a band of 5 to 10 feet wide around and adjacent to the building where pests are active and may find entrance. Treat at a rate of 1 to 1 ½ pounds per 500 sq. ft. or 2 to 3 pounds per 1,000 sq. ft.

**SPOT TREATMENT:** To control **Ants, including Acrobat, Argentine, Big-Headed, Cornfield, Harvester, Leafcutter, Little Black, Pavement and Pyramid Ants**. If possible, locate and treat nest first. Product should be applied to thoroughly cover the nest (1 to 2 teaspoons) and sprinkled with sufficient water to dissolve granules. In addition to treating ant nests or mounds, entry points of buildings and the soil surface along the perimeter of the building should be treated.

**DIGGER WASPS:** Apply 1 to 2 teaspoons of granules in and around each individual ground nest opening. Make the application at dusk when wasps are not active.

**IMPORTED FIRE ANTS:** Apply two tablespoons over each 8" to 10" diameter mound and up to 2 feet around to prevent escape of the queen. Immediately after application, water the granules into the soil gently with a light sprinkling can to avoid disturbing the colony. Use at least 1 gallon of water per mound. Apply in cool weather during the spring and fall (65-80°F) or in early morning or late evening for best results. Treat new mounds as they appear. If possible, make applications after a recent rainfall.

## PRECAUTIONARY STATEMENTS HAZARDS TO HUMANS AND DOMESTIC ANIMALS

**CAUTION:** Harmful if swallowed or absorbed through skin. Causes moderate eye irritation. Avoid contact with skin, eyes or clothing. Wash thoroughly with soap and water after handling and before eating, drinking, chewing gum or using tobacco.

### FIRST AID

Have the product container or label with you when calling a Poison Control Center or doctor, or going for treatment.

In the event of a medical or chemical emergency contact  **ChemTel INC.**  
North America 1-800-255-3924 or Worldwide Intl. +01-813-248-0585 ChemTel Inc.

<b>If Swallowed</b>	<ul style="list-style-type: none"><li>• Call Poison Control Center or doctor immediately for treatment advice.</li><li>• Have person sip a glass of water if able to swallow.</li><li>• Do not induce vomiting unless told to do so by the Poison Control Center or doctor.</li><li>• Do not give anything by mouth to an unconscious person.</li></ul>
<b>If in Eyes</b>	<ul style="list-style-type: none"><li>• Hold eye open and rinse slowly and gently with water for 15-20 minutes.</li><li>• Remove contact lenses, if present, after the first 5 minutes, then continue rinsing eye.</li><li>• Call a Poison Control Center or doctor for treatment advice.</li></ul>
<b>If on Skin or Clothing</b>	<ul style="list-style-type: none"><li>• Take off contaminated clothing.</li><li>• Rinse skin immediately with plenty of water for 15-20 minutes.</li><li>• Call a Poison Control Center or doctor for treatment advice.</li></ul>
<b>If Inhaled</b>	<ul style="list-style-type: none"><li>• Move person to fresh air.</li><li>• If person is not breathing, call 911 or an ambulance, then give artificial respiration, preferably by mouth-to-mouth, if possible.</li><li>• Call a Poison Control center or doctor for treatment advice</li></ul>

## ENVIRONMENTAL HAZARDS

To protect the environment, do not allow pesticide to run off into storm drains, drainage ditches, gutters, or surface waters. Applying this product in calm weather when rain is not predicted for the next 24 hours will help ensure the wind or rain does not blow or wash pesticide off the treatment area. Sweeping any product that lands on a driveway, sidewalk, or street, back onto the treated area of the lawn or garden will help to prevent run off to water bodies or drainage systems.

**NOTE:** Buyer assumes all risks of use, storage or handling of this product not in strict accordance with directions given herewith. Voluntary Purchasing Groups, Inc. warrants this product to conform to the chemical description on the label and for the purposes stated on the label. The limit of any liability incurred shall be the purchase price paid by the User or Buyer.

Hi-Yield® is a registered trademark of Voluntary Purchasing Groups, Inc.

32320-0715-TP

Manufactured For:  
 **Voluntary  
Purchasing  
Groups, Inc.**  
230 FM 87 • BONHAM, TX 75418  
PA Reg No. 7401-454  
EPA Est. No. 7401-TX-01  
Visit Us At: [www.hi-yield.com](http://www.hi-yield.com)  
Product Questions? 855-270-4776

