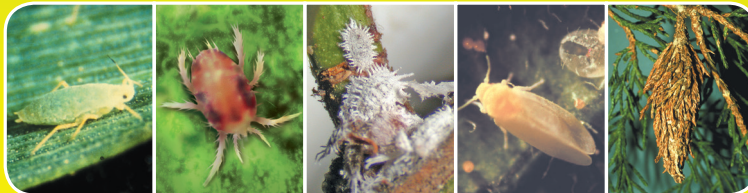


# Hi-Yield®

## 55% Malathion



Aphid

Spider Mite

Mealybug

Whitefly

Bagworm

- For Outdoor Garden Use Only
- Controls Aphids, Bagworms And Many Other Listed Insects
- For use on listed outdoor ornamental herbaceous plants, ornamental non-flowering plants, ornamental woody shrubs, vegetables, and fruit trees
- 1 ½ Teaspoons Makes 1 Gallon Of Spray

**KEEP OUT OF REACH  
OF CHILDREN  
CAUTION**

**See Back Label Panel  
for Additional  
Precautionary Statements**

**ACTIVE INGREDIENTS:**

Malathion(0,0-dimethyl dithiophosphate of  
diethyl mercaptosuccinate)..... 55.0%

**OTHER INGREDIENTS\*:**..... 45.0%

**TOTAL:**.....100.0%

\*Contains Aromatic Petroleum Derivative Solvents

This product contains 5 pounds of Malathion per gallon.

**NET CONTENTS: ONE GALLON (128 FL. OZ./ 3.78 LITERS)**

Hi-Yield® 55% Malathion Spray

PEEL FROM CORNER OF BOOKLET

### FIRST AID - ORGANOPHOSPHATE PESTICIDE

<b>If Swallowed</b>	<ul style="list-style-type: none"><li>• Immediately call a Poison Control Center or doctor.</li><li>• Do not induce vomiting unless told to by a Poison Control Center or doctor.</li><li>• Do not give <b>any</b> liquid to the person.</li><li>• Do not give anything by mouth to an unconscious person.</li></ul>
<b>If On Skin Or Clothing</b>	<ul style="list-style-type: none"><li>• Take off contaminated clothing.</li><li>• Rinse skin immediately with plenty of water for 15 to 20 minutes.</li><li>• Call a Poison Control Center or doctor for treatment advice.</li></ul>
<b>If In Eyes</b>	<ul style="list-style-type: none"><li>• Hold eye open and rinse slowly and gently with water for 15-20 minutes.</li><li>• Remove contact lenses, if present, after the first 5 minutes, then continue rinsing eye.</li><li>• Call a Poison Control Center or doctor for treatment advice.</li></ul>
<b>If Inhaled</b>	<ul style="list-style-type: none"><li>• Move person to fresh air.</li><li>• If person is not breathing, call 911 or ambulance, then give artificial respiration, preferably by mouth-to-mouth, if possible.</li><li>• Call a Poison Control Center or doctor for further treatment advice.</li></ul>
Have the product container or label with you when calling a Poison Control Center or doctor or going for treatment.	
<b>NOTE TO PHYSICIAN:</b> Contains petroleum distillate. May pose an aspiration pneumonia hazard. This product is an organophosphate insecticide. If symptoms of cholinesterase inhibition are present, atropine sulfate by injection is antidotal. 2-PAM is also antidotal and may be administered, but only in conjunction with atropine.	

In the event of a medical or chemical emergency, contact   
North America 1-800-255-3924 or Worldwide Intl. + 01- 813-248-0585.

Manufactured By:



230 FM 87  
BONHAM, TX 75418  
EPA Reg. No. 7401-10-34911  
EPA Est. No. 7401-TX-01  
Visit Us At: [www.hi-yield.com](http://www.hi-yield.com)  
Product Questions? 855-270-4776



**Hi-Yield® 55% Malathion Spray** control Aphids, Thrips, Spider Mites, Lace Bugs, Japanese Beetle Adult, Tent Caterpillar, and Soft Scale. Use on Fruits, Vegetables, and Ornamentals as listed on the label.

#### PRECAUTIONARY STATEMENTS

#### HAZARDS TO HUMANS AND DOMESTIC ANIMALS

Harmful if swallowed. Harmful if absorbed through skin. Harmful if inhaled. Causes moderate eye irritation. Avoid contact with skin, eyes and clothing. Avoid breathing spray mist or vapor. Prolonged or frequently repeated skin contact may cause allergic reaction in some individuals. Wash hands thoroughly with soap and water after handling and before eating, drinking, chewing gum, using tobacco, or using the toilet.

#### ENVIRONMENTAL HAZARDS

To protect the environment, do not allow pesticide to enter or run off into storm drains, drainage ditches, gutters or surface waters. Applying this product in calm weather when rain is not predicted for the next 24 hours will help to ensure that wind or rain does not blow or wash pesticide off the treatment area. Rinsing application equipment over the treated area will help avoid run off to water bodies or drainage systems.

This pesticide is highly toxic to bees exposed to direct treatment on blooming crops or weeds. Do not apply this product or allow it to drift to blooming crops or weeds while bees are actively visiting the treatment area.

#### PHYSICAL OR CHEMICAL HAZARDS

Combustible: Do not use or store near heat or open flame.

#### DIRECTIONS FOR USE

IT IS A VIOLATION OF FEDERAL LAW TO USE THIS PRODUCT IN A MANNER INCONSISTENT WITH ITS LABELING.

#### RESTRICTIONS

**DO NOT APPLY THIS PRODUCT IN A WAY THAT WILL CONTACT ANY PERSON OR PET, EITHER DIRECTLY OR THROUGH DRIFT. KEEP PEOPLE AND PETS OUT OF THE AREA DURING APPLICATION.**

Do not allow people or pets to enter the treated area until sprays have dried. Do not reuse measuring utensil for food use.

Mix **Hi-Yield® 55% Malathion Spray** with water in accordance to directions given below and spray thoroughly covering all plant parts. Apply using a hose-end or tank sprayer.

**PEACHES AND PEARS:** For control of Codling Moth, Plum Curculio, apply at petal fall and every 11 to 14 days up to 2 applications. Controls Oriental Moth, Plum Curculio on Peaches; for Codling Moth, Plum Curculio and Redbanded Leafroller on Pears use 2 tablespoons per gallon of water. Full coverage spray application should be made. Make no application to Pears within 3 days of harvest, or to Peaches within 7 days of harvest. This spray application may cause injury to Bosc Pears.

**TOMATOES, CABBAGE, AND POTATOES:** To control Spider Mites and Aphids on Tomatoes, Cabbage and Potatoes use 1½ teaspoons per gallon of water. Spray over all to get complete coverage. Do not apply within 7 days of harvest. The minimum application interval is 7 days. Do not apply more than 8 times per year.

**OUTDOOR ORNAMENTALS (ornamental herbaceous plants, ornamental non-flowering plants, ornamental woody shrubs)** To control Lace Bug, Euonymous Scale, Aphids, Mealybugs, SpiderMites, Whiteflies, Fourlined Leaf Bug, Japanese Beetle Adult, Potato Leafhopper, Tarnished Plant Bug, Thrips, Rose Leafhopper, and Scurfy Scale, mix 1½ teaspoons per gallon of water and spray thoroughly.

Do not use on certain species of Crassula, and sensitive Ferns such as Maidenhair, Boston and Pteris. On Ornamentals to control Birch Leafminer, Boxwood Leafminer, Bagworms, Tent Caterpillar, Azalea Scale, Pine Leaf Scale, and Soft Scale, mix 2 teaspoons per gallon of water and spray thoroughly. The minimum application interval is 10 days. Do not apply more than 2 times per year.

### STORAGE AND DISPOSAL

Do not contaminate water, food, or feed by storage and disposal.

**Pesticide Storage:** Hi-Yield® 55% Malathion Spray should be stored in the original unopened container in a secure dry place. Do not contaminate with other pesticides or fertilizers. The product should never be heated above 55°C (131°F), and should not be stored for long periods of time at temperature in excess of 25°C (77°F).

**Pesticide Disposal:** To avoid wastes, use all material in this container by application according to label directions. If wastes cannot be avoided, offer remaining product to a waste disposal facility or pesticide disposal program (often such programs are run by state or local governments or by industry).

**Container Disposal: If empty: Non refillable container.** Do not reuse this container. Place in trash or offer for recycling if available. **If partly filled:** Call your local solid waste agency for disposal instructions. Never place unused product down any indoor or outdoor drain.

**NOTE:** Buyer assumes all risks of use, storage or handling of this product not in strict accordance with directions given herewith. Voluntary Purchasing Groups, Inc. warrants this product to conform to the chemical description on the label and for the purposes stated on the label. To the extent consistent with applicable law, the limit of any liability incurred shall be the purchase price paid by the User or Buyer.

Hi-Yield® is a Registered Trademark and Brand Name of Voluntary Purchasing Groups, Inc. Use of this Brand Name on the label of this product is not intended to imply any increased effectiveness for this product in comparison to similar products.

Manufactured By:



230 FM 87

BONHAM, TX 75418

EPA Reg. No. 7401-10-34911

EPA Est. No. 7401-TX-01

Visit Us At: [www.hi-yield.com](http://www.hi-yield.com)

Product Questions? 855-270-4776

31083-1015-TC

