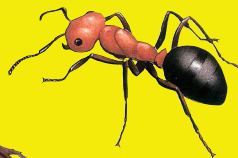


# Hi-Yield®

## Kill-A-Bug II

### Indoor-Outdoor Spray

Ready-To-Use



**KILLS  
BEDBUGS!**

- Kills For Up To Four Months
- Kills Termites\* And Carpenter Ants
- Kills Cockroaches, Ants, Silverfish, Crickets, Flies, Spiders, Fleas, Ticks And Other Insects

**ACTIVE INGREDIENT:**

Deltamethrin ..... 0.02%

**INERT INGREDIENTS:** ..... 99.98%

**TOTAL:** ..... 100.00%

**KEEP OUT OF REACH  
OF CHILDREN**

**CAUTION**

See Back Panel For Additional  
Precautionary Statements

NET CONTENTS ONE QUART (32 FL. OZ. / 946ML)

## FIRST AID

Have the product container or label with you when calling a poison control center, or going for treatment.

**In the event of a medical or chemical emergency, contact  
North America 1-800-255-3924 or Worldwide Intl. + 01- 813-248-0585**

<b>If Swallowed</b>	<ul style="list-style-type: none"> <li>• Call a poison control center or doctor immediately for treatment advice.</li> <li>• Have person sip a glass of water if able to swallow.</li> <li>• Do not induce vomiting unless told to do so by a poison control center or doctor.</li> <li>• Do not give anything by mouth to an unconscious person.</li> </ul>
<b>If Inhaled</b>	<ul style="list-style-type: none"> <li>• Move person to fresh air.</li> <li>• If person is not breathing, call 911 or an ambulance, then give artificial respiration, preferably by mouth-to-mouth, if possible.</li> <li>• Call a poison control center or doctor for further treatment advice.</li> </ul>
<b>If On Skin Or Clothing</b>	<ul style="list-style-type: none"> <li>• Take off contaminated clothing.</li> <li>• Rinse skin immediately with plenty of water for 15 - 20 minutes.</li> <li>• Call a poison control center or doctor for treatment advice.</li> </ul>
<b>If In Eyes</b>	<ul style="list-style-type: none"> <li>• Hold eye open and rinse slowly and gently with water for 15 - 20 minutes.</li> <li>• Remove contact lenses, if present, after the first 5 minutes, then continue rinsing eye.</li> <li>• Call a poison control center or doctor for treatment advice.</li> </ul>

Manufactured By:



230 FM 87 • BONHAM, TEXAS 75418

EPA Reg. No. 7401-458

EPA Est. No. 7401-TX-01

Visit Us At: [www.hi-yield.com](http://www.hi-yield.com)

Product Questions? 855-270-4776



**Manufactured By:**



**230 FM 87**

**BONHAM, TEXAS 75418**

**EPA REG. NO. 7401-458**

**EPA EST. NO. 7401-TX-01**

**Visit Us At: [www.hi-yield.com](http://www.hi-yield.com)**

**Product Questions? 855-270-4776**

**32310-0818-TL**



## **PRECAUTIONARY STATEMENTS HAZARDS TO HUMANS AND DOMESTIC ANIMALS**

**CAUTION:** Harmful if swallowed, inhaled or absorbed by skin. Causes moderate eye irritation. Avoid contact with eye, skin or clothing. Wash thoroughly with soap and water after handling. Keep children and pets away from treated areas until spray has dried. Avoid contamination of food or water supplies. Contact with product may result in transient tingling and reddening of the skin. Remove contaminated clothing and wash before reuse.

## **ENVIRONMENTAL HAZARDS**

This product is extremely toxic to fish and aquatic invertebrates. Do not apply directly to water. Do not contaminate water when disposing of wastewater or rinsate. This product is highly toxic to bees exposed to direct treatment or residues on blooming crops or weeds. Do not apply this product or allow it to drift to blooming crops or weeds if bees are visiting the treatment area.

## **PHYSICAL OR CHEMICAL HAZARDS**

Do not apply this product in or on electrical equipment due to possibility of shock hazard.

## **DIRECTIONS FOR USE**

IT IS A VIOLATION OF FEDERAL LAW TO USE THIS PRODUCT IN A MANNER INCONSISTENT WITH ITS LABELING.

Not For Use On Plants Grown For Sale Or Other Commercial Use.

**General Information:** Hold container upright. Turn sprayer nozzle to "on" position. Hold approximately 12 inches from surface to be sprayed. Squeeze trigger and spray until surface is slightly moist. Do not spray up into air. Apply to surfaces only as a spot and crack and crevice treatment. Thoroughly cover aquariums before application and for at least 1 hour after application. Make applications when pests are present or suspected. Cover all food handling surfaces and cover or remove all food and cooking utensils or wash thoroughly after treatment. Exposed food should be covered or removed.

**Hi-Yield® Kill-A-Bug II Indoor-Outdoor Spray** long-lasting action continues killing insects for up to four months after

you spray. Contact kill gives you immediate results when spraying insects directly, while residual activity kills insects when they return to treated areas. **Hi-Yield® Kill-A-Bug II Indoor-Outdoor Spray** will not stain surfaces or fabrics.

**Hi-Yield® Kill-A-Bug II Indoor-Outdoor Spray** is for use in and around residences and their immediate surroundings such as (but not limited to): apartments, attics, automobiles, basements, bathrooms, boats, cabins, carports, clothes storage, decks, driveways, garages, homes, kitchens, patios, pet sleeping areas, porches, recreational vehicles, storage areas and utility rooms. Do not use in commercial food handling establishments, restaurants or other places where food is commercially prepared, processed or served.

#### **INDOORS:**

***Cockroaches (including adult and immature stages of both non-resistant and organophosphate and carbamate resistant strains), Ants, Boxelder Bugs, Centipedes, Crickets, Dermestids, Firebrats, Fleas, Ground Beetles, Palmetto Bugs, Pillbugs, Scorpions, Silverfish, Spiders, Sowbugs, Ticks and Waterbugs:***

Apply as a spot and crack and crevice treatment to areas infested or where these pests crawl, hide or may find entry, especially in hidden areas around sinks and storage areas, along and behind baseboards, around doors and windows, behind and under refrigerators, cabinets, sinks and stoves, the underside of shelves, drawers, bookcases, and similar areas. **For Ants:** Also spray Ant trails, Ants directly and other areas where Ants may find entry. **For Spiders:** Apply along and behind baseboards, to window and door frames, in corners, around water pipes, storage localities, in attics, crawl spaces and other areas over which these pests may crawl, hide or nest. **For Ticks:** Spray surfaces until moist (approximately 6 squirts per square foot of surface area). Treat baseboards, storage areas and other locations where these pests are found. Repeat treatments every 7 days only as needed to control insect infestation. Do not apply more than 3 times per year.

**Carpenter Ants:** For effective control, locate and treat their

nests and surrounding areas. Apply around doors and windows and other places where Carpenter Ants enter premises and where they crawl and hide. Spray into infested wood through existing openings.

**Ticks (Including Ticks that may cause Lyme Disease) and Fleas on surfaces:** Remove pet bedding, destroy or clean thoroughly. Spray pet resting quarters until moist. (Approximately 6 squirts per square foot of surface area). Treat baseboards, storage areas and other locations where these pests are found. Adult Fleas and larvae contacted by spray will be killed. Put fresh bedding down once spray has dried. DO NOT spray animals directly. DO NOT allow pets onto treated areas until spray has dried. For best results, pets should be treated with an appropriate Flea and/or Tick control product registered for use on pets before allowing them to return to the treated area. Spray rugs and carpets where infestations are bad. Delicate fabrics should be tested for staining in an inconspicuous area prior to use.

**Flying Insects: Houseflies, Gnats, Mosquitoes and Small Flying Moths:** Spray localized resting areas such as under eaves, porches, inside surfaces or window and door frames, surfaces around light fixtures and cords, railings, etc. and anywhere these Insects may rest. Insects coming to rest on treated surfaces will be killed.

**Domestic/Residentially Located Horse Stables:** To Control **Stable Flies, Horn Flies, House Flies, Face Flies, Horse Flies, Deer Flies, Mosquitoes and Gnats** in small stable areas. Apply thoroughly to surfaces until wet. Avoid runoff of spray. Insects coming to rest on treated surfaces will be killed or repelled. Repeat treatment every 7 days only as necessary to control infestations. Do not apply more than 3 times per year. DO NOT spray animals or humans directly, or apply to animal feed or watering equipment.

**Pantry Pests: Grain Beetles (Rusty, Merchant and Sawtoothed), Flour Beetles (Red and Confused), Chocolate Moths, Cigarette Beetles, Clover Mites, Cluster Flies, Drugstore Beetles, Elmleaf Beetles,**

**Rice Weevils, Lesser Grain Borers, Spider Beetles and Tobacco Moths:** Treat exposed stages. Remove all food-stuffs, utensils and shelf paper from area to be treated. Discard used shelf paper and any infested foodstuffs. Apply spray to shelves and in cracks and crevices behind and under cupboards and cabinets. Allow spray to dry completely prior to replacement of shelf paper, food and utensils. Wash thoroughly any exposed food handling surfaces and utensils before use.

**Carpet Beetles (Black, Furniture and Varied):** Spray on and under edges of floor coverings, under rugs and furniture and in closets or other localities where these Insects are found.

**Webbing Clothes Moths:** Use this product as a crack and crevice treatment in closets and other storage areas where these pests are found. This is an adjunct treatment and will not control Moth Larvae already on clothes. DO NOT apply to clothing.

**Bedbugs:** Remove linens and wash thoroughly before reuse. Lightly spray (until slightly wet) mattresses, especially tufts, folds and edges. Apply to the interior of the frame. Allow to dry before remaking bed or occupying. After mattress is dry, cover with mattress cover and sheet. Do not use mattress without cover.

**Ornamental House Plants:** To control **Aphids, Japanese Beetles, Lace Bugs, Leafminers, Mealybugs, Mites and Spider Mites** on house plants. Prior to spraying, remove plants from living and eating areas-preferably outdoors. Put in an area where they will not be in contact with pets, children or food. Spray upper and lower foliage surfaces until wet. Avoid wetting blossoms, blooms or flowers, if possible. Avoid spraying to the point of runoff. Plants can be returned to original locations when all surfaces are dry. If plants cannot be moved, cover or remove exposed food and food handling surfaces. Avoid spraying surrounding areas. Keep children and pets away from treated plants until all surfaces have dried completely. Repeat applications every 7 days only as necessary to control insect infestations. Do not apply more than 3 times per year.

## OUTDOORS

Point sprayer away from face. Turn sprayer to "on" position. Hold sprayer on a slight downward angle, approximately 12 inches from surface to be sprayed. Spray with wind if breeze is blowing. DO NOT contaminate fish ponds or apply directly to water.

**Pests on Outside Surfaces of Buildings:** For control of building infestations of **Ants, Clover Mites, Crickets and Sowbugs (Pillbugs)**. Spray foundation of building where insects are active and may find entrance up to a height of 2 to 3 feet. Apply to outside surfaces of buildings where insects tend to congregate. Spray areas include (but are not limited to) screens, window frames, eaves, porches, patios, garages and refuse dumps. Repeat treatments every 7 days only when necessary to control infestations. Do not apply more than 3 times per year.

**Crawling Insects: Ants, Cockroaches (including Asian Cockroaches), Centipedes, Crickets, Mole Crickets, Water Bugs and Silverfish.** Spray infested surfaces of outside areas (see General Information). Spray legs of outside tables and chairs. **For Ants:** Spray freely around Ant trails, and hills and nests until wet. Spray around nests hidden under steps, brickwork, concrete, etc. Break apart accessible nests and spray on and around debris. Repeat every 7 days only as necessary to control infestations. Do not apply more than 3 times per year.

**Lone Star Ticks, Dog Ticks, Crickets and Fleas:** Apply thoroughly to control infestations in bushes, grass or weeds.

**Wasps, Hornets, Yellow Jackets and Bees:** Spray nests and other surfaces where these Insects nest or may rest. Aim spray at nest openings. Applications should be made late in the evening when insects are at rest. Do not reapply unless these pests reoccupy treated nests.

**Flying Insects: Houseflies, Gnats, Mosquitoes and Small Flying Moths:** Spray outside surfaces of window and door frames and other areas where these pests may enter the home. Also spray localized resting areas, such as under eaves, porches, surfaces around light fixtures and cords, railings, etc. where these Insects may rest. Insects coming to rest on treated surfaces will be killed.



**Termites\*, Carpenter Ants and Carpenter Bees:** (for localized control only.) Apply **Hi-Yield® Kill-A-Bug II Indoor-Outdoor Spray** to voids or channels in damaged wood of a structure, or to cracks, crevices and spaces in and between wooden portions of a structure or between wood and the foundation in locations vulnerable to attack such as crawl spaces. Retreat every 7 days only as necessary to control infestations. Do not apply more than 3 times per year.

\*For Termites, the purpose of such applications is to kill workers or winged forms which may be present in the treated areas at the time of application. This product is not recommended as sole protection against Termites. For active infestations, get a professional inspection. Such applications are not a substitute for mechanical alteration, soil treatment or foundation treatment but are merely a supplement.

**For Control of Ornamental Garden Insects:** For use on Roses, Dahlias, Asters and other Ornamentals to kill Japanese Beetles hit by spray, as well as Whiteflies, Aphids, Army Worms, Lace Bugs, Mealy Bugs, Exposed Thrips, Pavement Ants, Spiders, Spider and Red Mites, Clover Mites and Leafminers.

May be used on plants, as well as a multi-purpose spray in small ornamental gardens and for spot treatments to prevent Insects from spreading into large garden areas.

May also be used on other Plants such as African Violets, Asters, Azaleas, Begonias, Camellias, Carnations, Chrysanthemums, Delphiniums, Dogwood, English Ivy, Euonymus, Fushia, Geraniums, Crassula, Grape Vine, Kentia Palm, Laurel, Marigolds, Rhododendrons, Rubber Plants, Snapdragons, Flocks, Wandering Jews and Zinnias.

When spraying plants, do not operate closer than 18 inches. Use a sweeping motion. Be cautious about over-wetting tender foliage, young plants and new growth. Do not spray plants when temperatures exceed 90°F. DO NOT apply to vegetable plants or other plants used for food or feed purposes. Spray insects directly whenever possible. Repeat treatment every 7 days only as necessary to control insect infestations. Do not apply more than 3 times per year.

## STORAGE AND DISPOSAL

**PESTICIDE STORAGE:** Store in a cool, dry area away from children and pets. Protect from freezing. Do not store below 32°F. If freezing occurs, allow product to thaw and shake well before using. Some product separation may occur on freezing which is reversible on shaking. Freezing does not adversely affect this product performance.

**CONTAINER DISPOSAL: Non-refillable container.** Do not reuse this container. **If empty:** Place in trash or offer for recycling if available. **If partly filled:** Call your local solid waste agency for disposal instructions. Unless otherwise instructed, place in trash. Never place unused product down any indoor or outdoor drain.

**NOTICE:** BUYER ASSUMES ALL RISKS OF USE, STORAGE OR HANDLING OF THIS PRODUCT NOT IN STRICT ACCORDANCE WITH DIRECTIONS GIVEN HEREWITH. VOLUNTARY PURCHASING GROUPS, INC. WARRANTS THIS PRODUCT TO CONFORM TO THE CHEMICAL DESCRIPTION ON THE LABEL AND FOR THE PURPOSES STATED ON THE LABEL. THE LIMIT OF ANY LIABILITY INCURRED SHALL BE THE PURCHASE PRICE PAID BY THE USER OR BUYER.