



# Natural GUARD<sup>®</sup>



## *Cottonseed Meal*

- Slow Release, All Natural Organic Nitrogen
- For Use on All Types of Plants
- Excellent for Home Gardens



**NET WEIGHT 3 LBS. (1.36 KG)**

# Cottonseed Meal

## KEEP OUT OF REACH OF CHILDREN

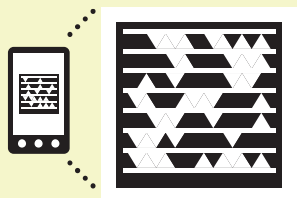
**Natural Guard® Cottonseed Meal** helps acidify alkaline soils and is an excellent source of natural slow-release nitrogen recommended for most gardening applications. This product can be used for feeding acid-loving plants such as Rhododendrons, Azaleas, Blueberries, and Evergreen Conifers.

### DIRECTIONS FOR USE

Feed plants with **Natural Guard® Cottonseed Meal** at planting and every 2 months. Sprinkle over area and mix lightly into soil. Water in after application.

TYPE OF PLANT	APPLICATION RATE NEW PLANTS	APPLICATION RATE ESTABLISHED PLANTS
Annuals, Perennials, and Vegetables	5 cups per 25 sq. ft. 5 cups per 25 ft. row	3 cups per 25 sq. ft. 3 cups per 25 ft. row
Ornamental Shrubs and Trees	5 cups per 25 sq. ft. 5 cups per 25 ft. row For Individual Plants use ½ cup for each 2 ft. of plant height.	1.5 cups per 25 sq. ft. 1.5 cups per 25 ft. row
Container Plants	6 tbsp per gallon of soil.	4 tbsp per gallon of soil.

Not for use in organic crop and food production in California.



Get the free mobile app at <http://gettag.mobi>

## 6-1-1 GUARANTEED ANALYSIS

Total Nitrogen (N) ..... 6%  
 6% Water Insoluble Nitrogen\*  
 Available Phosphate (P<sub>2</sub>O<sub>5</sub>) ..... 1%  
 Soluble Potash (K<sub>2</sub>O) ..... 1%

Derived From: Cottonseed Meal.

\*6% Slowly Available Nitrogen from Cottonseed Meal

F370



230 FM 87 • BONHAM, TEXAS 75418  
 Visit Us At: [www.naturalguard.com](http://www.naturalguard.com)

Information regarding the contents and levels of metals in this product is available on the internet at: <http://www.aapfco.org/metals.htm>

