

### FIRST AID

<b>IF IN EYES:</b>	<ul style="list-style-type: none"><li>• Hold eye open and rinse slowly and gently with water for 15-20 minutes.</li><li>• Remove contact lenses, if present, after the first 5 minutes, then continue rinsing eye.</li><li>• Call a poison control center or doctor for treatment advice.</li></ul>
<b>IF ON SKIN OR CLOTHING:</b>	<ul style="list-style-type: none"><li>• Take off contaminated clothing.</li><li>• Rinse skin immediately with plenty of water for 15-20 minutes.</li><li>• Call a poison control center or doctor for treatment advice.</li></ul>

### NOTE TO PHYSICIAN

Contains petroleum distillate - vomiting may cause aspiration pneumonia.

Have the product container or label with you when calling a poison control center or doctor or going for treatment. For information regarding medical emergencies or pesticide incidents, call 1-888-740-8712.

### PRECAUTIONARY STATEMENTS HAZARDS TO HUMANS & DOMESTIC ANIMALS

**CAUTION:** Harmful if absorbed through skin. Causes moderate eye irritation. Avoid contact with skin, eyes or clothing. Wash thoroughly with soap and water after handling, and before eating, drinking, chewing gum, using tobacco or using the toilet. Remove and wash contaminated clothing before reuse.

### ENVIRONMENTAL HAZARDS

This pesticide is extremely toxic to aquatic organisms, including fish and aquatic invertebrates. Do not apply directly to water. Do not contaminate water when cleaning equipment or disposing of equipment washwaters or rinsate. Drift and runoff may be hazardous to aquatic organisms in water adjacent to treated areas. Applying this product in calm weather when rain is not predicted for the next 24 hours will help to ensure that wind or rain does no blow or wash pesticide off the treatment area. This product is highly toxic to bees exposed to direct treatment on blooming crops or weeds. Do not apply this product or allow it to drift to blooming crops or weeds while bees are actively visiting the area.

### PHYSICAL OR CHEMICAL HAZARDS

Flammable. Contents under pressure. Keep away from heat, sparks, and open flame. Do not puncture or incinerate container. Exposure to temperatures above 130°F may cause bursting.

### DIRECTIONS FOR USE

It is a violation of Federal Law to use this product in a manner inconsistent with its labeling.

#### Use Restrictions

- Do not contaminate food and feedstuffs.
- Do not apply when food is present.
- Do not allow adults, children, or pets to enter the treated areas until sprays have dried.
- Do not apply directly to sewers or drains, or to any area like a gutter where drainage to sewers, storm drains, water bodies, or aquatic habitat can occur, except as directed by the label.
- Do not apply this product in a way that will contact adults, children, or pets, either directly or through drift.
- Do not use in commercial food/feed processing, preparation, storage, or serving areas.
- Remove pets and birds and cover fish aquariums before spraying, and turn aquarium systems off.
- Do not water treated area to the point of runoff.
- Do not make applications during rain.
- All outdoor applications must be limited to spot or crack-and-crevice and wasp and hornet nest treatments only.
- All outdoor applications to impervious surfaces such as sidewalks, driveways, patios, porches and structural surfaces (such as windows, doors, and eaves) are limited to spot and crack-and-crevice applications only.

In the home, cover all food / feed processing surfaces and utensils. Cover or remove exposed food/feed.

**For Control of Nests of Wasps, Yellow Jackets and Hornets:** The best time to spray the nest is in the early morning or early evening when the air temperature is cooler, most insects are in the nest, and little activity is observed around the nest opening. Spray only if the air is still. Stand at a safe distance from the nest. Do not stand directly under the nest. Hold container upright at arm's length and point the actuator at the nest. First spray the opening of the nest. Then spray the rest of the nest until it is saturated. Treated insects may fall out of the nest and die. Any insects returning to the nest after treatment will be killed. Wait 48 hours before removing the nest. Hose off foliage of desirable plants contacted with spray.

For scorpions, stand 3-4 feet away and thoroughly cover the insect. Make sure scorpions are dead before removing.

This product may stain or adversely affect vinyl, painted, and plastic surfaces. Avoid application to asphalt roofing shingles as staining may occur. Test in an inconspicuous area and re-check in a few hours before using in areas where spray may contact these surfaces.

**ATTENTION:** This product contains a chemical known to the state of California to cause cancer.

### STORAGE AND DISPOSAL

Do not contaminate water, food, or feed by storage or disposal.

#### Pesticide Storage

Store in a cool, dry area. Always store pesticides in the original container. Store away from food and pet food.

#### Pesticide Disposal and Container Handling

Do Not Puncture or Incinerate!

Nonrefillable container. Do not reuse or refill this container.

**If empty:** Place in trash or offer for recycling if available.

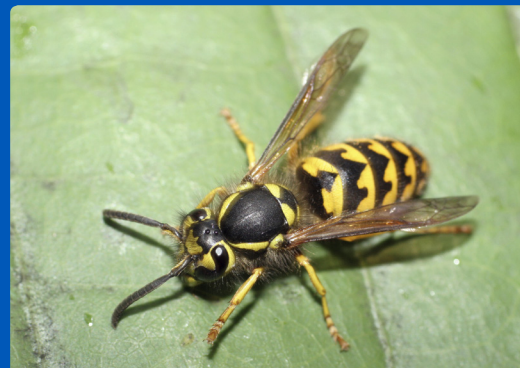
**If partly filled:** Call your local solid waste agency for disposal instructions.

Distributed by:



230 FM 87 • BONHAM, TEXAS 75418  
EPA Reg. No. 1021-1649-7401  
EPA Est. No. 11623-GA-1  
EPA Est. No. 11623-GA-2  
EPA Est. No. 11623-GA-3  
Product Questions? 855-270-4776

10044-0715-AP



ferti·lome®

# Wasp & Hornet Killer

- Gives Rapid Knockdown And Kill Of Wasps, Yellow Jackets, And Hornets
- Reaches Nests More Than 20 Feet Above Ground
- Ready-To-Use
- Kills Scorpions

#### ACTIVE INGREDIENTS:

Tetramethrin.....	0.200%
Sumithrin.....	0.125%
<b>OTHER INGREDIENTS:*</b> .....	<b>99.675%</b>
<b>TOTAL:</b> .....	<b>100.000%</b>

\*Contains petroleum distillate

KEEP OUT OF REACH OF CHILDREN

# CAUTION

SEE BACK PANEL FOR ADDITIONAL PRECAUTIONS

NET WEIGHT 14 OZ. (396 G)